

PRODUCT SPECIFICATION SHEET

Heavy Duty Industrial Storage Cabinets

- These heavy duty industrial storage cabinets are made from reinforced sheet metal and are great for storing tools, parts and many other items in the workplace
- Full height cabinets come standard with 4 adjustable shelves and 1/2 height cabinet comes standard with 2 adjustable shelves - extra shelves can be purchased if required
- Optional drawer units can be purchased in either 100mm or 200mm deep
- Drawers come standard with 15 compartments (4 slotted partitions & 10 dividers)
- Total Cabinet Load Capacity: 600kg
- Shelf Capacity: 150kg
- Finish: Powder coated light grey with light blue coloured doors/drawers



Full Height Cabinet

- Shelf Capacity: 100kgs
- 4 adjustable shelves as standard
- 3 point key lock system
- Optional drawer units available which fit inside unit so doors can be locked

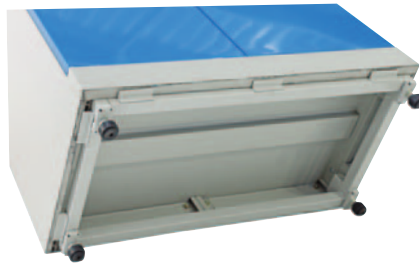
Code: TR7201



1/2 Height Cabinet

- Shelf Capacity: 100kgs
- 2 adjustable shelves as standard
- 3 point key lock system
- Option drawer units available which fit inside unit so doors can be locked

Code: TR7200



Cabinet base stand available



Optional drawer units available

Code	Details	Capacity (kg)	Overall Size WxDxH (mm)	Unit Weight (kg)
TR7200	1/2 Height Industrial Cabinet	150 per shelf	900x450x900	45
TR7201	Full Height Industrial Cabinet	150 per shelf	900x450x1800	85
TR7202	Small Drawer Unit (to suit cabinets)	50 per drawer	100mm deep	8
TR7203	Large Drawer Unit (to suit cabinets)	75 per drawer	200mm deep	15
TR7204	Extra Shelves to suit Cabinets	150	840x380x30	5
TR7205	Cabinet Base Stand (suits TR7201) raises cabinet 70mm			4
TR7206	100mm Divider to suit Drawer Units	-	-	-
TR7207	200mm Divider to suit Drawer Units	-	-	-

Distributed By

STORMAX