

Dexion EasyFit Wire Shelving



Product overview

The Dexion EasyFit® Wire Shelving is a system that has been designed to help improve the storage capacity of your floor space that may be otherwise unusable i.e. corners. The EasyFit® Wire Shelving can easily be re-configured to suit storage of any kind including medical equipment and consumables.

The range offers two durable and functional finishes; chrome for dry environments; and stainless steel for harsh or very wet environments. With its modern, industrial look, our chrome units are ideal for all types of general storage applications.

This flexible system does not require any tools to assemble, adjust shelf heights or to level. The wide range of optional accessories include posts, shelves, post connectors, corner unit connectors, mobile unit bumpers, baskets, castors, hangers, handles, rails, dividers, ledges and label holders which ensure the system can meet your storage needs now and into the future.

Key features and benefits

- Versatile system, easily dismantled and repositioned
- Readily customised using our options and accessories
- Flexibility to add units as your needs change or grow
- Special sizes and accessories available
- Warranty ranges from 3 yrs to 10 yrs depending on the finish and application

Technical specifications

Height	1000mm	1900mm
	1200mm	2000mm
	1500mm	2100mm
	1800mm	2200mm
Width	610mm	1215mm
	757mm	1370mm
	910mm	1518mm
	1060mm	1822mm
Depth		355mm
		460mm
		533mm
		610mm
Adjustment pitch		25.4mm
Finishes		Chrome
		Stainless steel 304

* All dimensions shown in millimetres (mm).

Dexion EasyFit® Wire Shelving

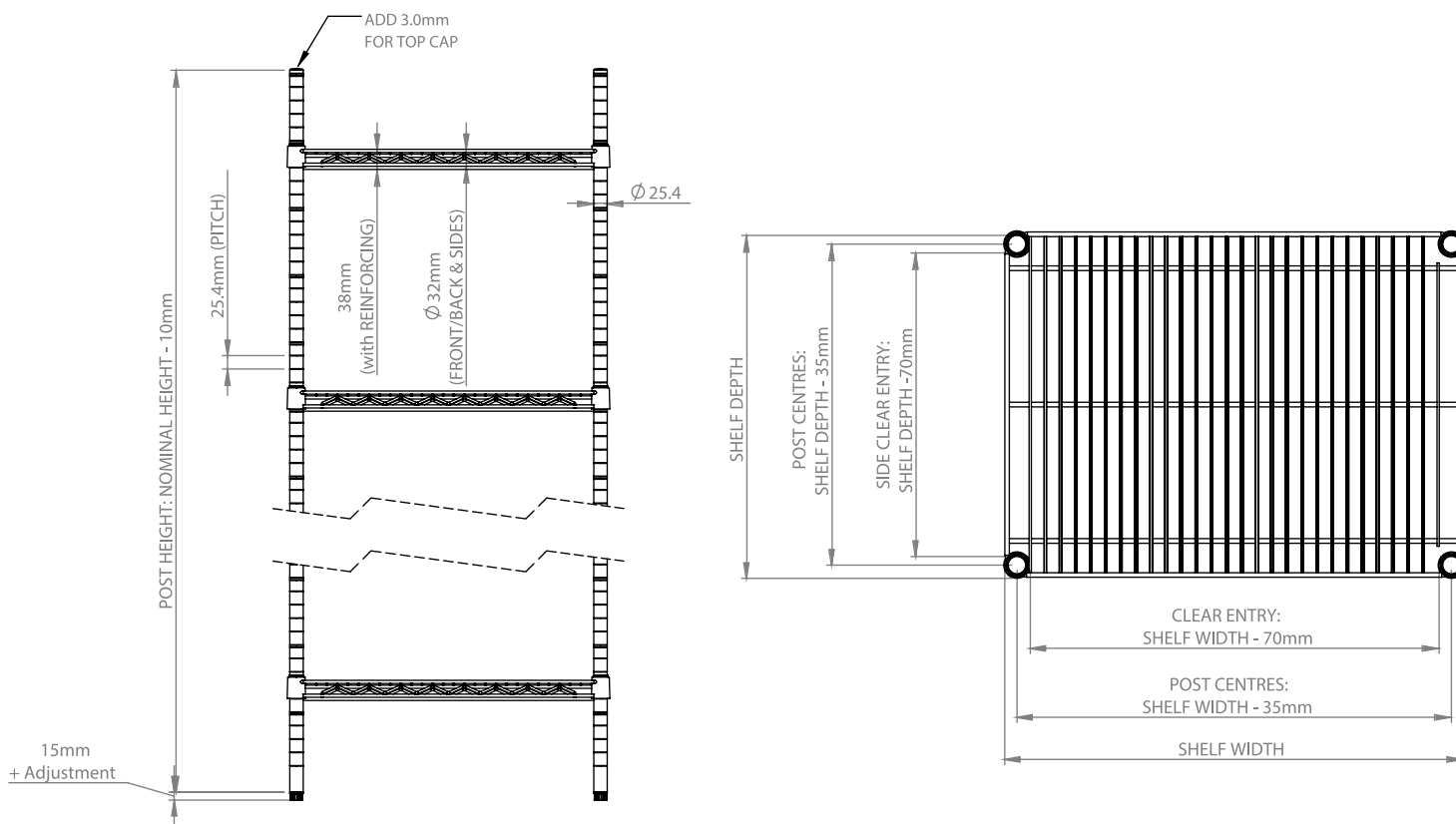
Shelf loads

Shelf width (mm)	Shelf depth (mm)						
Bay width (mm)	610	757	910	1060	1215	1518	1822
355	180kg	180kg	180kg	180kg	130kg	130kg	130kg
460	180kg	180kg	180kg	180kg	130kg	130kg	130kg
533	250kg	180kg	180kg	180kg	180kg	180kg	180kg
610	250kg	200kg	180kg	180kg	180kg	150kg	150kg

Note: Loads are based on the maximum deflection L/175

Maximum Static bay load: it is recommended not to exceed 650kg per bay (i.e. 5x Shelves, 130kg per shelf).

Overall dimensions



Dexion EasyFit® Wire Shelving

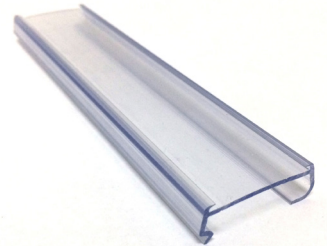
Accessories



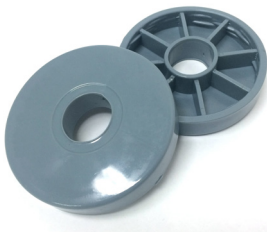
U-Handles



Ledges



Shelf Label holders



Bumpers



Shelf Dividers



S-Hooks



Bay Connectors



Castors

Contact

For more information on the Dexion EasyFit® Wire Shelving, please contact us on 1300 180 358.

Disclaimer:

The Information contained herein is the intellectual property of Dexion. The Information is defined to include: data, text, images, specification, graphics, design details and any and all other information whatsoever contained herein. The Information has been produced exclusively for Dexion and may not be used for any other purpose. None of the information may be used, altered, edited, copied, distributed or duplicated in any way without the express written consent of Dexion. Whilst the utmost care is taken to ensure the accuracy of the information contained herein, Dexion makes no guarantee as to its accuracy. Dexion shall, under no circumstances, be liable for any costs, losses, expenses or damages which may in any way be attributable to the use or adoption of such data and/or design details. All dimensions indicated are nominal only. Dexion reserves the right to alter or amend any of the information herein, including data and design details, without prior notice.